



UNIVERSITY of MARYLAND
BALTIMORE
CENTER FOR GLOBAL ENGAGEMENT

Center for Global Engagement Annual Report 2021

Published January 2022



Improving the Human Condition Globally

Welcome

Welcome to the Center for Global Engagement's first annual report, which is also a celebration of the center's 10th anniversary in 2021. The UMB Center for Global Engagement (CGE) has dramatically grown and evolved over the last 10 years and the time is right to start publishing an annual report to review the work of the center and preview what is planned for 2022 and beyond. The goal of this annual report is to highlight the strong and growing global engagement taking place throughout UMB – a powerful reflection of the university's goal of improving the human condition globally. The report is also a reminder that CGE is here to help the UMB community dream about, plan, and implement global education, service, and research initiatives.



The report includes descriptions of CGE's programs, activities in 2021, and, to celebrate our 10th anniversary, a history of the Center and its underlying conceptual framework. For each program, the report shares how the program is linked to UMB's Internationalization Report and Strategic Plan. The impact of the COVID-19 pandemic on global engagement is severe, but this report highlights how much global activity is underway and will continue.

UMB's 2022-26 Strategic Plan

Theme 6: GLOBAL ENGAGEMENT AND EDUCATION

Objective: UMB will enhance its impact and reputation as a globally engaged institution committed to improving the human condition through engagement, education, and research.

Outcomes:

1. UMB is committed to and promotes interdisciplinary, innovative, equitable, and sustainable solutions to domestic and global challenges.
2. UMB provides students the opportunity and institutional support to engage in global learning.
3. UMB expands University programs that value, support, and celebrate the richness and expertise of international students, scholars, faculty, and staff.
4. UMB provides enhanced operational support and a knowledge platform with which the schools and functional units align their programs and processes to develop global collaborations, track global activities, and share successes.

What Is the UMB Center for Global Engagement?

The Center is a resource center for global engagement at UMB. CGE has signature programs to support global engagement while also responding to requests for information and advice from students, staff, and faculty on a wide range of matters, including creation of overseas learning experiences, pre-departure training, international logistics, and partnerships. In addition, CGE is home to the Office of International Services, supporting enrollment and integration of international students and hiring of international faculty, postdoctoral fellows, and staff. Conceptually, CGE is a hybrid center with elements of a global health academic center (seed funding, scholarship, academic programs) and elements of a traditional international education office (education abroad, visa and immigration services, and curricular globalization programs). The hybrid nature of the center is a good fit for UMB's composition as a professional and graduate university.

Why Does UMB Have a Center for Global Engagement?

The operating premise of CGE, and the reason for its existence, is UMB's acknowledgement of the importance of global research, service, and education for students, faculty, and staff.

For students, research demonstrates that education abroad improves academic and career outcomes, fosters intercultural understanding, provides a global context for working with diverse populations, and builds "enlightened nationalism" (students who are more tolerant and less fearful of other countries, but with a greater sense of national pride). These positive attributes of education abroad are particularly meaningful at the graduate and professional level as students can see the various ways in which their professions are carried out in different settings. There is no better laboratory for understanding and innovation than observing the familiar in a new context and these benefits are heightened when applied through an interprofessional lens.

For faculty, academic research is ever more international. Collaboration with faculty colleagues around the world provides access to specialized equipment, supports development of new research projects and agendas, and taps into new sources of funding.

On the receiving side, bringing international students and scholars benefits both the individuals who come to UMB, and the campus community at large. International students and scholars can learn in UMB's classrooms, laboratories, and clinics; build professional and academic networks; and experience and contribute to the diversity of UMB's community. At the same time, studying alongside international students and scholars is highly beneficial for U.S. students. It gives them a better understanding of international issues, foreign affairs, and immigration issues. It exposes UMB students, faculty, and staff to different interpersonal and communication styles, which makes them better active listeners and critical thinkers. Finally, UMB benefits from the contributions of international students and scholars who participate in and enrich the learning environment in our classrooms, conduct cutting edge research, and provide excellent patient care in our clinical settings.

CGE's Guiding Principle: Global Learning

Historically, international education focused on travel (more formally referred to as "mobility") with students leaving to study abroad and the welcoming of international students and scholars into U.S. institutions of higher education. In-person experiences are incredibly valuable but not always available to students with limited resources, who are parents, or who are working full-time. More recently, and propelled by the COVID-19 pandemic, the field of international education has evolved to encompass a comprehensive framework of "global learning." While fostering mobility in and out of the U.S. will remain an essential function of CGE, global experiences need to be available for *every* student to succeed in the interconnected, increasingly diverse global landscape in which they will live and work. For that to happen, global learning also needs to take place in Baltimore.

Why "Global" Instead of "International"? What's in the Word Choice?

Some universities use the word "international" to describe offices like CGE, but the use of "global" in this context is intentional and important. While "international" is often used in discussions relating to locations and countries, "global" implies something holistic or comprehensive, and applies to everyone and everything on the planet, e.g. "global warming." Using the word "global" collapses distinctions between communities in Baltimore, the U.S., and overseas, recognizing shared challenges and shared solutions.

CGE uses "global engagement" rather than "global health" because CGE also provides support to the international programs at the Schools of Law and Social Work. The word "engagement" also highlights that CGE, and UMB more broadly, view relationships as the essential ingredient of global work. Whether someone is teaching, researching, or taking part in service, those activities are done with, and for, communities as part of mutually beneficial *engagements*.

Celebrating 10 Years

UMB Center for Global Engagement

CGE developed out of an NIH Fogarty International Center “Framework for Global Health” grant awarded to the University of Maryland School of Medicine (SOM) in 2005. Led by Dr. Hala Azzam, the grant supported creation of a Global Health Resource Center that was comprised of faculty representatives from each school on campus to “provide a platform by which these researchers can interact to develop multidisciplinary research themes, as well as develop a high quality and affordable multidisciplinary training programs in global health.” The grant funds provided travel awards to students and faculty. From its earliest days, the resource center was meant to work alongside the university’s world-renowned global health research programs (primarily at SOM) by encouraging cross-campus global health research collaborations but also by focusing on global health education for students.

“As a committee member since 2006, I’ve seen tremendous leadership devoted to organization, innovation, growth, and support of UMB’s global health initiatives engendering national and international recognition of our programs.”

J. Edward Moreton, PhD

Professor of Pharmacology, UM School of Pharmacy

Founding Members

Some of the original Global Health Resource Center members are still involved in the center as members of the CGE Advisory Committee:

- **Jon Mark Hirshon**, MD, MPH, Associate Professor and Acting Director, Department of Emergency Medicine, UM School of Medicine
- **Miriam Laufer**, MD, MPH, Associate Professor of Pediatrics; Director of Division of Malaria Research, Institute for Global Health, UM School of Medicine
- **J. Edward Moreton**, PhD, Professor of Pharmaceutical Sciences, UM School of Pharmacy
- **Yolanda Ogbolu**, PhD, CRNP-Neonatal, FAAN, Associate Professor and Chair of Professional Education and Practice, UM School of Nursing
- **Robert Percival**, JD, Professor and Director of Environmental Law Program

Under the direction of Dr. Miriam Laufer (SOM), GHIC took its first important step towards creating and supporting global programming on campus by creating the interprofessional grant program for students and faculty, which debuted in Malawi in 2010. This program was unique in the U.S. at that time and the subject of several scholarly articles and workshops leading to development of similar programs on other university campuses. It is for this reason that we consider 2010 as the first year of the center because most of the center's current activities flow for the expertise developed in the creation of the Interprofessional Grant Program.

When the NIH Fogarty grant ended, the UMB Office of Research and Development (ORD) continued to support the work of this faculty group, which became known as Global Health Interprofessional Council (GHIC). In 2012, ORD responded to GHIC's need for high-level administrative support by creating the Director of Student Center for Global Education position, filled by Dr. Bonnie Bissonette. At the same time, ORD asked UM School of Social Work faculty member, Dr. Jody Olsen, to help lead campus global efforts given her previous roles in Peace Corps administration.

In 2013, Dr. Olsen and GHIC member Virginia Rowthorn (then Managing Director of the UM Carey School of Law's Law & Health Care Program) took on leadership of GHIC. Having two non-health science faculty members at the helm cemented the cross-campus and broad interprofessional focus of the early center. Growing momentum and interest in campus-wide global collaborations coalesced and led to movement from GHIC to the creation of the Center for Global Education Initiatives with a handful of staff members, Dr. Olsen as Executive Director, and a physical home on the third floor of the SMC Campus Center. Starting in 2013, with a national roundtable to create interprofessional competencies for global health education, the center has hosted several invitation-only workshops on critical issues in global health and education.

"When we first started, we were a handful of faculty throughout the University of Maryland Baltimore campus just meeting each other for the first time and learning about the global work occurring in all of the schools. The hard work of the internationally-engaged faculty, the dedication of the CGE team, and the commitment of campus leadership has made UMB a leader in global engagement."

Miriam Laufer, MD

Associate Director for Malaria Research, UM School of Medicine

In 2017, the Center moved from ORD to the Office of Academic Affairs, now working under the strong leadership of Dr. Flavius Lilly, Vice Provost and Vice Dean of the Graduate School at UMB. Also in that year, Dr. Olsen retired and Virginia Rowthorn became Executive Director (now Assistant Vice President for Global Engagement).

Celebrating CGE's Founding Director: DR. JODY OLSEN



Dr. Jody Olsen, PhD, MSW, took CGE from a faculty committee to an MHEC-recognized academic center with eight staff members, multiple programs, and scholarship agenda. Her vision for the center was strong and unwavering. Dr. Olsen began her international work as a Peace Corps Volunteer, serving in Tunisia from 1966-1968. She then served the agency in multiple leadership positions until assuming the Director role in early 2018 through 2020. Before returning to the Peace Corps in 2018, she served as Visiting Professor at the UMB School of Social Work and Executive Director of CGE. Throughout her career, Dr. Olsen has championed the expansion of service, learning and international opportunities for Americans of all backgrounds and has served as a mentor to many. CGE is honored that Dr. Olsen is now an inaugural Senior Fellow.

"The collaboration among UMB leadership, deans, and interested faculty from all seven schools set the Center's model for interprofessional global health education and learning, a model being used today."

Jody Olsen

Senior Fellow, UMB Center for Global Engagement

In 2018, the annual UMB President’s Symposium and White Paper Project addressed the topic of global literacy. In the student Fellows’ report, they defined global literacy as “cross cultural fluency and responsiveness in understanding, engaging, and communicating in an interconnected world.” One of the Fellows’ recommendations was for UMB to join the American Council on Education’s (ACE) Internationalization Lab. UMB entered ACE’s 16th internationalization lab cohort in August 2018 with CGE staffing the initiative that involved a working group with representatives from all around UMB.

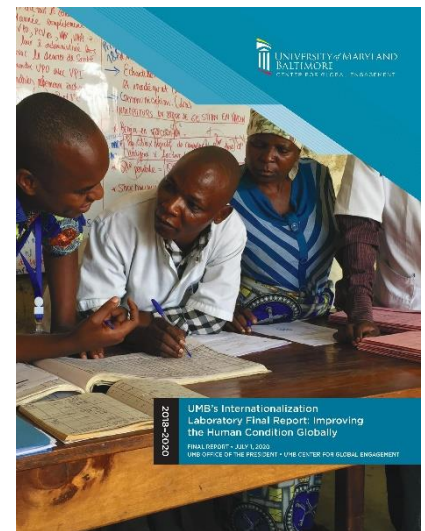
The comprehensive report was published in 2020 with curated recommendations to improve and grow UMB’s global work and reputation as a global leader in research, service, and education. The process has already had a strong impact on UMB’s global activities:

1. Launch of the International Operations Initiative to improve UMB’s ability to engage with colleagues operationally while developing strong risk management processes.
2. Launch of the President’s Global Impact Fund (managed through CGE) to grow new international collaborations.
3. Increased funding for the GLOBALtimore Teaching Fellows Program.
4. Inclusion of a global theme in UMB Strategic Plan for 2022-26.

In November 2019, the center adopted its current name — the Center for Global Engagement — and the Maryland Office of Higher Education (MHEC) recognized CGE as an official academic center. Also in 2019, the Office of International Services, under the leadership of Amy Ramirez, joined CGE. This merger represented a new direction for UMB to enhance alignment and foster increased synergies, between “inbound” and “outbound” global activities and reinforce the idea that global efforts must include UMB students, faculty, postdoctoral fellows, and staff in Baltimore.

In 2021, Dr. Jody Olsen and Graduate School faculty member Dr. Carlos Faerron Guzmán were named the first CGE Senior Fellows, to honor their past and ongoing collaborations with CGE.

In March 2020, due to the COVID-19 pandemic, CGE suspended its hallmark Interprofessional Global Grant Program when UMB suspended international travel. The center took on leadership of the International Focus Group of the university’s COVID Recovery Task Force and convened campus stakeholders to make decisions on international travel, international research guidance, and international students and scholars. Spurred by the pandemic, CGE has supported global learning at home through the GLOBALtimore Teaching Fellows program and through technical advice on virtual global learning. As the pandemic wanes, CGE will be one of the campus’s strongest proponents of finding safe ways to engage with international colleagues overseas and inviting colleagues to Baltimore. Whatever the future brings, this is a globally connected world and CGE will continue to support the university’s engagement with it.



“The Center for Global Engagement has encouraged and supported the UMB community to engage in global, interdisciplinary, real-world problem-solving as an integral component of student professional development.”

William Piermattei

Managing Director, Environmental Law Program, UM Carey School of Law

Reflections: CGE's 10th Anniversary

“Being part of CGE for me was about connections and expansion. I formed long-lasting and ongoing connections and friendships with diverse UMB and global colleagues who are dedicated to service, experiential learning, and scholarship. Co-leading an interprofessional UMB team in Gambia, West Africa gave me an unforgettably rich and personal connection to my West African heritage and culture.”

Gregory Carey

Assistant Dean for Student Research and Education and Associate Professor of Microbiology and Immunology,
UM School of Medicine

"It has been an absolute pleasure to work with the Center for Global Engagement. When we encountered major obstacles to sending funds to our collaborators in Rwanda, the CGE team worked tirelessly and found creative solutions that ensured these needed funds were transferred. Because of the efforts of CGE, we have been able to support online Rwandan medical education programs in internal medicine and gastroenterology despite the COVID pandemic."

Erik von Rosenvinge

Associate Professor of Medicine, UM School of Medicine

“Our office works closely with the Center on matters related to international travel. The Center staff provide excellent, timely, and knowledgeable customer service to individual travelers and to my staff. I always enjoy meeting with the Center to discuss policy and procedures. It is such a pleasure to work with a wonderful group!”

Cindy Lyons

Deputy Controller, UMB Office of the Controller

“The Global Health Initiative at UMD-SPH values our partnership with the CGE – from Public Health Beyond Borders’ travels to Peru with UMB dental students to participation in the Global Health Summit. CGE has opened doors and enriched experiences for faculty, graduate and undergraduate students at UMD.”

Elisabeth Fost Maring

Associate Clinical Professor and Associate Director,
The Global Health Initiative, University of Maryland
School of Public Health (College Park)



"Collaboration with colleagues at the Center for Global Engagement is symbiotic and critical, especially when it comes to international risk management. It's excellent working with them!"

Leanne Johnson

Director of International Risk Management, University of Maryland (College Park)

"The Center provided me many steppingstones. From my initial global academic projects through Health Volunteers Overseas to University-level participation in Center-sponsored grants, I learned techniques, made global and local connections, advanced the implementation of international Fulbright-sponsored education projects, developed local academic engagement projects, published research articles, and collaborated on an international textbook. Colleagues from CGE have been my lighthouse, mentors, and personal resource, for which I am eternally grateful!"

Leslie B. Glickman

Visiting Assistant Professor, UM School of Medicine Department of Physical Therapy and Rehabilitation Science

"Over the last five years, UMB CGE has supported our global health program in Zambia, which has helped me understand what true interprofessional global education is and has generated important research on antimicrobial resistance."

Lottie Hachaambwa

Assistant Professor, UM School of Medicine and CEO, Ciheb-Zambia

"Global health remains a critical part of UMB, in large part because of the Center for Global Engagement. Through our global engagement, the professional students, faculty, and staff broaden the impact of UMB while bringing home critical lessons learned. CGE remains an important and vibrant part of the UMB community."

Jon Mark Hirshon

Professor, UM School of Medicine

"The University of Maryland School of Dentistry has a rich history building international partnerships and CGE continues to be a critical partner in global education. Over the past few years, the CGE has supported the development of student-focused programs in clinical care, preventive education and health literacy, and exposure to global healthcare delivery systems in the Dominican Republic, China, Japan, and Peru. "

Kate Noonan

Senior Director of Special Projects for the Dean, UM School of Dentistry

"I have benefitted significantly from interacting with colleagues and students from the partner Universities over the past year. The collaborative partnership has given me an amazing opportunity to grow as an academic and expand my horizons on the international plane. My participation in the Global Summit, especially, compelled me to reflect deeply on my role as a 21st century academic and the enormous responsibility I have towards my students as an agent of decolonization of legal education, research, and community engagement."

Chikosa Banda

Head of Foundational Law Department, University of Malawi Chancellor College

CGE Staff

Virginia Rowthorn, Assistant Vice President

Virginia Rowthorn, JD, LL.M. (Global Health Law), is the assistant vice president for global engagement at UMB and the executive director of the Center for Global Engagement. She also is an associate professor at the UMB Graduate School.

Bonnie Bissonette, Senior Director, International Partnerships

Bonnie Bissonette, MA, EdD, is the senior director of international partnerships, where she works to support faculty in creating and strengthening international partnerships and global opportunities for students at all seven UMB schools by working collaboratively with faculty and staff.

Amy Ramirez, Director of International Services

Amy Ramirez, MA, is the director of the Office of International Services UMB, where she oversees efforts to provide comprehensive services to UMB's international student and scholar community. Amy also leads the Center for Global Engagement's GLOBAltimore Teaching Fellowship.

Lauren Taylor, Senior Communications and Events Specialist

Lauren Taylor is the senior communications and events specialist, where she handles all aspects of communications, marketing, and event planning.

Gina Dreyer, Assistant Director of International Services

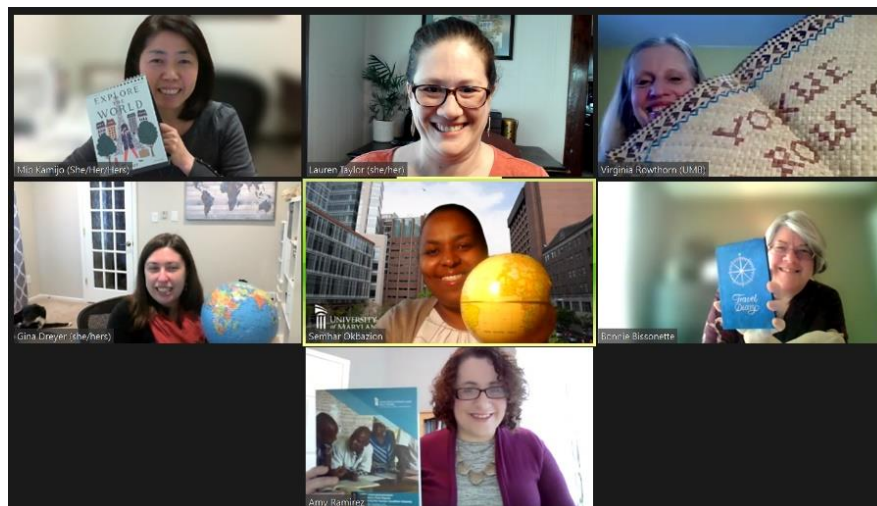
Gina Dreyer, MA is the assistant director of international services, where she specializes in educating international students and scholars on their visa status, and campus departments on procedures for requesting nonimmigrant visa sponsorship.

Semhar Okbazion, Assistant Director of International Services

Semhar Okbazion, LL.M., LL.B., is assistant director of international services, where she is the point person for employment visas (such as H-1B, TN, and E-3) for faculty and staff at UMB and serves as the backup student and J-1 scholar advisor.

Mio Kamijo, International Student Coordinator

Mio Kamijo is the International Student Coordinator in the Office of International Services, where she assists new and continuing international students by advising them on federal immigration regulations and supporting them personally, academically and culturally.



CGE Advisory Committee

School of Dentistry

- Kate Noonan, PhD, M.S.Ed, Senior Director of Special Projects (lead)
- Melissa Echalar, Events Coordinator
- Karen Fararone, DDS, MA, Associate Dean of Student Affairs
- Valli Meeks, DDS, MS, RDH, Clinical Professor
- Isabelita Rambob, DDS, Clinical Assistant Professor
- Hanae Saito, DDS, MS, CRC, ABP Diplomat, Clinical Associate Professor

Carey School of Law

- Crystal Edwards, JD, MA, Assistant Dean for Academic Affairs (lead)
- Peter Danchin, JD Professor and Director of International and Comparative Law Program
- Rebecca Hall, JD, Managing Director of Law & Health Care Program
- Robert Percival, JD, Professor and Director of Environmental Law Program
- William Piermattei, JD, Managing Director of Environmental Law Program

“I have worked closely with the Center since a remarkable visit to Malawi in 2012 as part of a UMB interdisciplinary team formed to evaluate health care utilization around maternal health services in the Chikhwawa district. That single project has now led to over a decade of collaboration and partnership with the Faculty of Law at the University of Malawi and a unique team-taught course on Environmental Justice, Public Health, and Human Rights.”

Peter Danchin

Professor and Director of International Comparative Law Program, UM Carey School of Law

School of Medicine

- Nadia Sam-Agudu, MD, Assistant Professor of Pediatrics (lead)
- Gregory Carey, PhD, Assistant Professor and Director of Student Summer Research and Community Outreach
- Cassidy Claassen, MD, MPH, Assistant Professor of Medicine
- Renee Cockerham, PhD, Program Manager of Office of Postdoctoral Scholars
- Lottie Hachaambwa, MD, ChB, Assistant Professor of Medicine
- Jon Mark Hirshon, MD, MPH, Associate Professor and Acting Director, Department of Emergency Medicine
- Adrian Holloway, MD, Assistant Professor of Pediatrics
- Miriam Laufer, MD, MPH, Associate Professor of Pediatrics; Director, Division of Malaria Research, Institute for Global Health
- Melissa McDiarmid, MD, MPH, Professor, Division Head of Occupational & Environmental Medicine
- David Riedel, MD, MPH, Assistant Professor of Medicine, Division of Clinical Care and Research, Institute of Human Virology
- Brenna Roth, MD, MPH, Faculty Member, Institute of Human Virology
- Kristen Stafford, PhD, MPH, Associate Professor, Technical Deputy Director for Ciheb
- Diane Marie St. George, PhD, Associate Professor of Epidemiology & Public Health, School of Medicine
- Mark Travassos, MD, MSc, Assistant Professor of Medicine

School of Nursing

- Yolanda Ogbolu, PhD, CRNP-Neonatal, FAAN, Associate Professor and Chair of Professional Education and Practice (lead)
- Mei Ching Lee, PhD, MSRN, CHPN, Associate Professor
- Veronica Njie-Carr, PhD, RN, ACNS-BC, FWACN, Associate Professor
- Charlotte Nwogwugwi, DrPH, BSN, CPH-BC, Assistant Professor

School of Pharmacy

- Agnes Ann Feemster, PharmD, BCPS, Associate Professor of Pharmacy Practice and Science and Assistant Dean for Experiential Learning Program (lead)
- Mark Brueckl, RPh, MBA, Assistant Director of Experiential Learning Program
- Emily Heil, PharmD, BCPS-AQ ID, Associate Professor, of Pharmacy Practice and Science
- J. Edward Moreton, PhD, Professor of Pharmaceutical Sciences
- Danya Qato, PhD, PharmD, MPH, Assistant Professor and Director of the Department of Pharmaceutical Health Services Research Graduate Program
- Peter Swaan, PhD, Professor and Chair of Pharmaceutical Sciences and Associate Dean for Research and Advanced Graduate Studies

School of Social Work

- Caroline Long, PhD, MSW, Associate Professor (lead)
- Deborah Gioia, PhD, MSSW, Associate Professor

Graduate School

- Bonnie Bissonette, MA, EdD, Senior Director of International Partnerships, CGE (co-lead)
- Carlos Faerron Guzmán, MD, MSc, Adjunct Faculty (co-lead)
- Erin Golembewski, PhD, Senior Associate Dean
- Flavius Lilly, PhD, MA, MPH, Vice Dean and Vice Provost of Academic and Student Affairs
- Kathy Marconi, PhD, MS, Senior Lecturer

UMB Administration

- Patty Alvarez, PhD, MS, Assistant Vice President of Student Affairs
- Herty Cortez Diaz, Business Operations Specialist, Maryland Global Initiatives Corporation
- Heidi Fancher, MPH, Operations Manager, UMB Office of Research and Development
- Jennifer Flinn, MA, Executive Director of International Affiliate Support, Maryland Global Initiatives Corporation
- Alexa Mayo, MLIS, AHIP, Associate Director for Services, Health Sciences and Human Services Library

“From its beginnings, I have so appreciated the extensive and meaningful support of the CGE on behalf of our mission to improve the human condition from Baltimore to globally.”

Caroline Long

Associate Professor and Director of Global Engagement, UM School of Social Work

2021: Year in Review

Visa and Immigration Services

Visa and immigration services for international students and scholars on UMB-sponsored visas are a central part of the Center for Global Engagement's Office of International Services (OIS) portfolio. While this work is highly process oriented, it serves a key role in UMB's internationalization efforts. Visas are what enable international students and scholars to come to Baltimore, pursue their studies, and contribute their knowledge and expertise to UMB's classrooms, laboratories, and clinics. International students and scholars represent a unique resource for global learning, particularly for the many UMB students who are unable to travel during their studies to have an international learning experience.

2021-2022 International Student Enrollments by UMB School

Dentistry	32
Graduate School	178
Law	20
Medicine	15
Nursing	46
Pharmacy	14
Social Work	3
Total	308

2021-2022 International Scholars by UMB School

Dentistry	44
Graduate School/ UMB Administration	6
Medicine	275
Nursing	3
Pharmacy	36
Social Work	3
Total	367

International students and scholars are a vital part of UMB's research enterprise. International students represent 21% of all UMB PhD student enrollments in the Fall 2021 semester. Approximately 70% of UMB's postdoctoral fellows are international scholars, which is consistent with national trends.

Visa services are often the gateway to knowing the international students and scholars better to connect them with resources and facilitate their sense of belonging at UMB. OIS staff strive to embody a humanistic and personal approach to advising international students and scholars, which is one of the ways OIS lives the UMB core values of respect and integrity, equity and justice, and well-being and sustainability.

Links to Internationalization and UMB Strategic Plan:

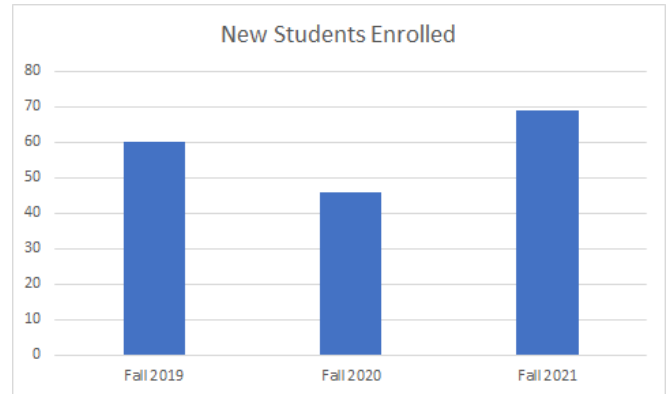
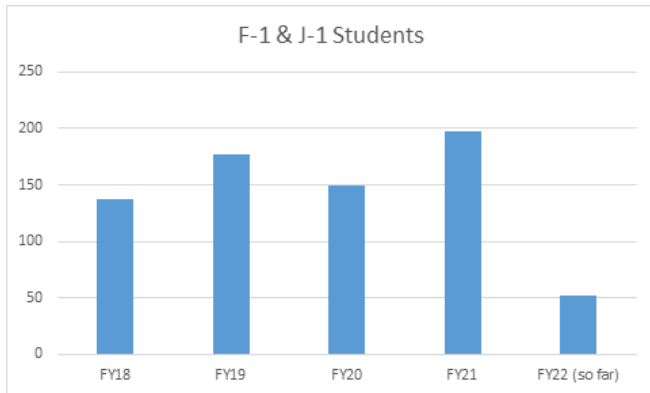
- **IZN recommendation #4:** Provide access to global education for all students.
- **IZN recommendation #5:** Increase support for international students and scholars.
- **IZN recommendation #10:** Promote global leadership on campus.
- **UMB Strategic Plan #2:** Provide students the opportunity to engage in global learning.
- **UMB Strategic Plan #3:** Expand programs for international students, scholars, faculty, and staff

2021 Updates:

International Student Visa Processing

Overall, student visa processing has been on a steady increase since FY18, with a slight dip in the last quarter of FY20 at the start of the COVID-19 pandemic. As the chart below demonstrates, international student utilization of OIS services rebounded last fiscal year; FY21 utilization is even higher than FY19.

Much of the FY21 increase can be attributed to the enrollment of students who deferred their Fall 2020 admission because of the pandemic, as well as improved access to visa appointments at U.S. embassies under the Biden administration. Because of the pandemic, constantly evolving travel restrictions, and concerns with the political climate in the U.S., international students need – and are asking for – enhanced support from OIS on a range of matters which has dramatically increased the time needed for student interaction. OIS intends to continue the enhanced international travel procedures, put in place due to the pandemic, into the future.



International Scholar Visa Processing

OIS uses several different visa types for international scholars, a term which includes postdoctoral fellow, faculty, and staff titles. The most used visa types are H-1B and J-1 visas. OIS sponsors H-1B visas most frequently for those international postdocs, faculty, and staff who are currently inside the United States. TN and E-3 visas are rarely sponsored but require similar procedures as H-1B visas. Alternatively, J-1 visas are often used for international postdocs and faculty located outside the United States at the time of hire.

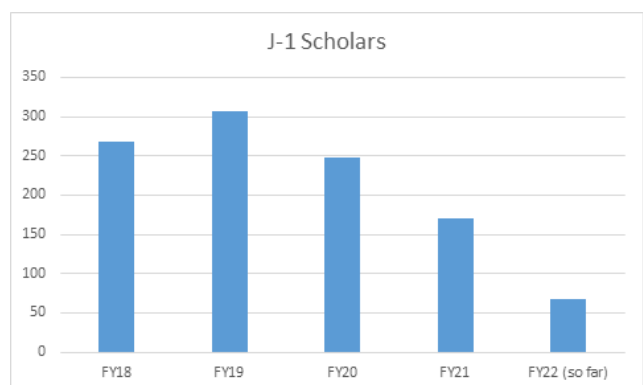
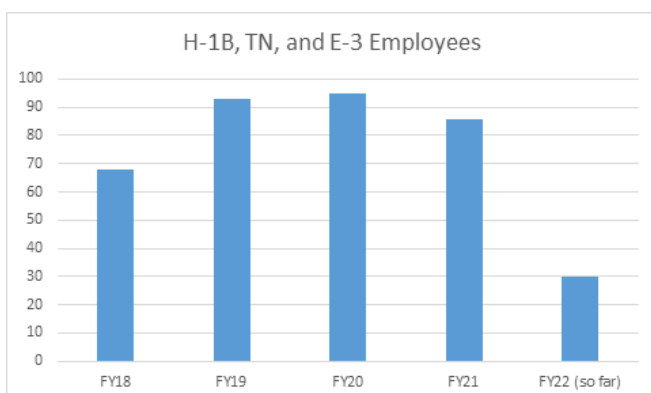
Postdoctoral fellows are 75% of UMB’s international scholar visa sponsorship, with 18% for faculty appointments and the remaining 7% for staff positions. H-1Bs are a more time consuming and complex visa request; on average an H-1B request takes 20 times longer to process than a J-1 request.

H-1B Visa Utilization

OIS has seen steady growth in H-1B filings even before the pandemic, and during the pandemic that trajectory was maintained. H-1B visa processing in the current fiscal year (FY22) is tracking upward compared to the same months in previous fiscal years, so OIS anticipates that FY22 H-1B visa processing will be higher than previous fiscal years.

OIS staff often hear from Principal Investigators that they have great difficulty recruiting postdocs. International postdoc candidates are often negotiating for H-1B visa sponsorship as part of the hiring process. UMB PIs advocate strongly for H-1B sponsorship for postdocs, so they can recruit the best candidates for their labs. In other words, the ability to offer timely H-1B visa processing is an essential tool for UMB to recruit postdocs for UMB-sponsored research projects.

J-1 scholar visa processing dropped in the last quarter of FY20 and FY21 due to the COVID-19 pandemic. Since J-1 requests are usually submitted for individuals located outside the United States, and U.S. Embassies and Consulates were closed for many months due to the pandemic, OIS saw fewer requests submitted by academic departments. However, J-1 visa processing for the first four months of FY22 (July 1,2021 – October 31,2021) is on trend compared to the same months in FY19 and FY20 fiscal years.

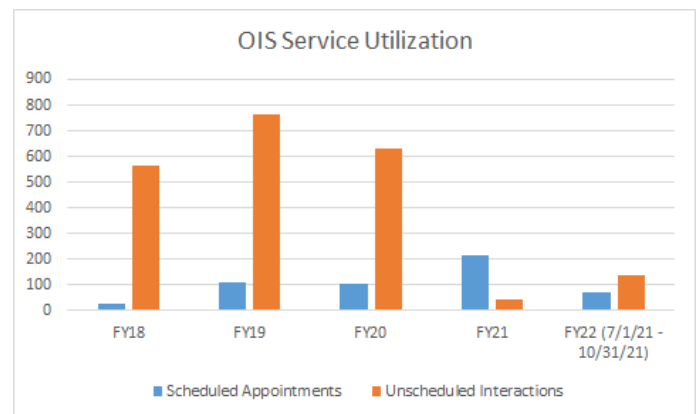


OIS Service Utilization Status

Unscheduled in-person interactions, such as document drop-off/pick up and walk-in advising services, dropped significantly during the COVID-19 pandemic due to mandatory telework. However, during the pandemic there was greater use of scheduled appointments, which tend to be more time-consuming interactions, especially given heightened stress around various immigration restrictions, rapidly shifting rules, and managing stress in the face of these uncertainties. Walk-in advising interactions average about 10 minutes, whereas scheduled appointments are usually 30 minutes.

Since the return to campus in the current fiscal year, there has been greater utilization of scheduled appointments compared to pre-pandemic years. Early FY22 data suggest OIS is on track to return to pre-pandemic office utilization levels, but these interactions are shifting towards more time-consuming scheduled appointments.

Year	Scheduled Appointments	Unscheduled Interactions
FY18	25	565
FY19	108	763
FY20	106	632
FY21	217	42
FY22 (7/1/21 - 10/31/21)	74	137



Future Plans

As the data above demonstrates, OIS has seen steady increases in many areas of visa services and shifts towards more labor-intensive and time-consuming visa requests and advising interactions. The growth in visa services utilization was already underway before the pandemic. OIS has requested an additional staff member to provide these services in an efficient and compliant manner while still prioritizing our personalized and humanistic approach that international students and scholars expect and deserve.

International Student Programming

International student programming, led by Mio Kamijo, supports the Center for Global Engagement's Office of International Services (OIS) mission to serve the needs of UMB's international student and scholar community. OIS programming activities are designed to help new incoming international students and scholars adjust to UMB, promote social inclusion of international students and scholars, make their unique expertise and talents more visible to the university community, and facilitate connections among international students and scholars spread across UMB's seven schools.

Links to Internationalization and UMB Strategic Plan:

- **IZN recommendation #5:** Increase support for international students and scholars.
- **UMB Strategic Plan #3:** Expand programs for international students, scholars, faculty, and staff.

2021 Updates:

OIS offered several co-curricular programs for international students and scholars.

- **Virtual Senior Student Talk (July 16, 2021):** 17 current international students provided support and moderated program-specific breakout rooms and sessions so that new international students could engage and ask questions. The total number of attendees was 46 students.
- **Virtual International Student Welcome (August 13, 2021):** 78 students, faculty, and staff attended.
- **Virtual Academic Life Wellness Panel Discussion (September 15, 2021):** Three new students attended, and the recording was posted on CGE's YouTube channel, allowing the session to be shared. The video has been viewed 23 times.
- **Global Perspective Conversation Program** runs from September 2021 to April 2022:
 - Virtual Facilitator Trainings on September 23, 2021, and October 7, 2021: Two facilitators were trained.
 - Two facilitators and 10 active students and scholars participated in 7 virtual weekly meetings. Facilitators are expected to continue the virtual weekly meetings in Spring 2022.
- **Virtual OPT Workshop for Graduating Students (September 17, 2021):** 22 students attended. The next virtual workshop will be held on February 9, 2022.
- **Virtual J-1 Scholar Orientation:** 14 scholars attended virtual sessions held monthly and will continue to June.
- **Virtual H-1B Orientation:** 18 employees attended sessions held quarterly and will continue through June.

"I was fortunate to facilitate the Global Perspectives Conversation Program as part of my participation in the President's Student Leadership Institute's (PSLI) certificate program. It's been a great experience to be a Global Perspectives Conversation facilitator where my global perspectives about diversity and inclusion were diametrically aligned with the program's goals and values."

Kaoutar Boumadi

Student, UM School of Social Work

COVID-19 impact:

FY20-21 programming plan was impacted by the pandemic, with all events shifted to a virtual platform. Due to embassy closures and immigration restrictions, many new international students could not travel to the U.S. and most new international students admitted for Fall 2020 deferred their enrollment to Fall 2021. As a result, the number of attendees at some programs and activities was impacted. For FY21-22, all events are planned virtually.

Future Plans:

Depending on COVID, OIS hopes to have more hybrid programming events for FY22-23. In particular, the International Welcome event could benefit from more in-person engagement. OIS plans to record the J-1 and H-1B orientation presentations to allow scholars to access the information on their own time. Additionally, OIS would like to collaborate more with the Intercultural Center and student organizations to expand student social programming. Finally, OIS would like to work with the UMB schools to collaborate on career-focused programming for international students, as it is an area of great student interest and requires a tailored approach given several issues that are unique to international students.

Presidents Global Impact Fund (PGIF)

Managed by CGE, the President's Global Impact Fund (PGIF) provides initial support for transformative initiatives that develop cross-campus and international collaborations and enhance UMB's global engagement and reach. PGIF was launched in early 2020 with 11 projects funded during the first round of funding and 3 projects in the second round of funding in 2021. One project (Samoa) had to be dropped because COVID-19 travel restrictions, although the grantee will be able to apply for funding again in the future. Another project (Morocco) was ended because the PI left UMB. A signature element of the program is that funding is contingent on inclusion of international partners from the time of application and compensation of collaborators' time.

Links to Internationalization and UMB Strategic Plan:

- **IZN recommendation #2:** Increase funding for global activities.
- **IZN recommendation #10:** Promote global leadership on campus.
- **UMB Strategic Plan #1:** Promote interdisciplinary, innovative, equitable, sustainable solutions to domestic and global challenges.

2021 Updates:

The program is supporting the following grantees:



Point Prevalence Study in Acute Pediatric Critical Illness in Low-Resource Countries

Adrian Holloway, MD, Assistant Professor, Pediatrics and Adnan Bhutta, MBBS, Professor, Pediatrics, UM School of Medicine



Kenya – REACH (Reaching, Engaging Adolescents and Young Adults for Care Continuum in Health) Mental Health

Peter Memiah, DrPH, MSc, Associate Professor, Epidemiology (Ciheb)
Fernando Wagner, MPH, DS, Professor, UM School of Social Work



Brazil – Developing Capacity for Long-Term Care of Older Adults Living with Dementia

Kirsten Corazzini, PhD, FGSA, Professor and Associate Dean
Vivian Schutz, PhD, MBA, RN, Assistant Professor, UM School of Nursing
Ester Villalonga Olives, PhD, MSc, Assistant Professor, UM School of Pharmacy



Malawi – Environmental Justice, Human Rights and Public Health Legal Theory and Practice Seminar

Diane Hoffman, JD, MS, Professor of Health Law, Director of Law & Health Care Program
Peter Danchin, JSD, LLM, LLB, Professor
Robert Percival, JD, MA, Professor from the UM School of Law



Nigeria – From Post-Graduate to PI: Developing Independent Scholars of Implementation Science in West and Central Africa

Nadia A. Sam-Agudu, MD, CTropMed, Associate Professor
Dr. Alash'le G. Abimiku, PhD, MS, Professor, UM School of Medicine



Nigeria – Integrated Peer-Based Diabetes Prevention in Substance Abuse Care Management: A Quality Improvement Program

Oluremi Adejumo, DNP, MS, RN, Assistant Professor
Ling-Yin (Lynn) Chen, Assistant Professor, UM School of Nursing



Portugal – Consortium for Malaria Research in Angola (C-MalAng)

Joana Carneiro Da Silva, PhD, Associate Professor of Microbiology and Immunology
Miriam Laufer, MD, Professor
Shannon Takala-Harrison, PhD, Associate Professor, UM School of Medicine



Rwanda – Strengthening the National Cancer Registry in Rwanda

David Riedel, MD, MPH, Associate Professor, UM School of Medicine and Director of Infectious Disease Fellowship Program, IHV
Clement Adebamowo, ChB, ScD, FWACS, FACS, Professor, IHV



Rwanda - Energizing Gastroenterology Development in Rwanda (EGD-Rwanda)

Erik von Rosenvinge, MD, Associate Professor
Kenechukwu Chudy-Onwugaje, M.B.B.S., MPH, GI Fellow, School of Medicine



The Gambia – UMB and Its Duty of Care: Building Resilient Health Systems with Host Country Partners

Melissa McDiarmid, MD, MPH, DABT, Professor, Director of Occupational & Environmental Medicine
Joanna Gaitens, PhD, MSN/MPH, Assistant Professor, UM School of Medicine



The Gambia – Strengthening Capacity in Health Research Ethics and Research Methodology

Veronica Njie-Carr, PhD, RN, ACNS-BC, FWACN, Associate Professor, UM School of Nursing
Henry Silverman, MD, MA, Professor, Director of MICU, UM School of Medicine



Zambia – Global Health Rotations

Cassidy Claassen, MD, MPH, Assistant Professor & Technical Director/Chief of Party (CIRKUIITS), CIHEB, IHV, and UM School of Medicine
Lottie Hachaambwa, MB, ChB, Assistant Professor, UM School of Medicine and CEO, Ciheb-Zambia

“Since our first visit to the Gambia in 2014, to our work’s enlargement as a President’s Global Interprofessional Project and especially during these last two years of COVID time, Virginia and Bonnie have been enthusiastic, supportive, creative and encouraging partners to us in all our preparations and challenges. They personally know the broad campus global community and work with us to ‘get to yes’ for any request or need that is presented. Their competent and effective engagement with partners both on- and off-campus enables and makes visible the accomplishments of UMB in the global arena.”

Melissa McDiarmid, MD, MPH

Professor of Medicine and Epidemiology & Public Health, UM School of Medicine

COVID-19 Impact:

Given that the PGIF program was launched just at the start of the pandemic, all of the projects have been impacted greatly. However, as noted, only one project had to be cancelled completely. To help investigators adapt, PIs were encouraged to develop new timelines; the start date of the funding was moved from FY21 to FY22; and funds were allowed to be rolled over. All of the projects have launched virtually in limited but important ways so that when travel becomes an option, the projects can be implemented fully. These projects are models of mutually reciprocal international partnerships. More information is available through biannual reports. Contact CGE for more information.

GLOBALtimore Teaching Fellows Program

The GLOBALtimore Teaching Fellows Program is designed to help UMB faculty learn about global education and how to integrate global concepts into new or existing courses. The program was created to support global learning on campus. While courses created through the program can have an international travel element, it is completely optional. The year-long program consists of workshops, a \$2,000 support stipend, and membership in a learning community of faculty from across UMB's professional and graduate schools.



Links to Internationalization and UMB Strategic Plan:

- **IZN recommendation #4:** Provide access to global education for all students.
- **IZN recommendation #10:** Promote global leadership on campus.
- **UMB Strategic Plan #2:** Provide students the opportunity to engage in global learning.

Updates from 2021:

In the current cohort, there are five Fellows:

- 1. Disaster Management: Interprofessional Collaborative Education**
Oluremi Adejumo, DNP, MS, RN, Assistant Professor, UM School of Nursing
- 2. Special Care Dentistry: A Global Perspective**
Sydnee Chavis, DMD, Clinical Assistant Professor, UM School of Dentistry
- 3. Professional Issues: Global Health in Physical Therapy**
Linda Horn, PT, DScPT, MHS, Assistant Professor, Dept. of Physical Therapy and Rehabilitation Science, UM School of Medicine
- 4. Global Pulse in DD&I Data Dissemination and Implementation Science**
Fadia T. Shaya, PhD, MPH, Professor, UM School of Pharmacy
- 5. A Global Perspective on Health Outcomes Assessment**
Ester Villalonga Olives, PhD, MsC, Assistant Professor, UM School of Pharmacy

The program has led to a number of innovative new courses or revised curricula in existing courses. Below is a list of courses that have already been taught once so far (and more are still in development):

- “Profession and Professionalism” UMB School of Dentistry (Kate Noonan, PhD, Senior Director, Special Projects for the Dean and Fotini Anagnostopoulos-King, DMD, Clinical Director and Clinical Assistant Professor)
- “Infectious Disease Epidemiology: A Global Perspective” UM School of Medicine (Lyndsay O’Hara, PhD, Assistant Professor, Department of Epidemiology and Public Health)
- “Law and Policy of Global Public Health Emergencies”, UMB Carey School of Law (Trudy Henson, JD, MA, Public Health Program Director, University of Maryland Center for Health & Homeland Security)
- “Introduction to Global Health in Dentistry”, UMB School of Dentistry (Eve Desai, DDS, Clinical Instructor, School of Dentistry)

As well as new Collaborative Online International Learning (COIL) courses. COIL courses are collaboratively developed and co-taught by faculty at UMB and a partner institution overseas and designed to facilitate student interaction between students in both countries, providing a truly global learning experience.

- “Interdisciplinary HIV Services: Learning from Differentiated Care Models in Botswana and Baltimore,” UMB School of Social Work and the University of Botswana (Caroline Long Burry, PhD, Associate Professor and Director of Global Initiatives at UM School of Social Work)
- “Intercultural Leadership Competencies for Global Collaboration,” UMB School of Dentistry and Bahiana School of Medicine and Public Health in Brazil (Isabel Rambob, DDS, Clinical Assistant Professor, UM School of Dentistry)
- “A Tale of Two Cities: Social Justice Practice in Divided Cities,” UMB School of Social Work and the University of Haifa in Israel (Corey Shdaimah, LLM, PhD, Daniel Thursz Distinguished Professor of Social Justice)

- “Cross-Cultural Qualitative Methods,” UMB School of Social Work and the Northeastern University School of Humanities and Law in China (Deborah Gioia, PhD, Associate Professor)
- “Interprofessional Care in Geriatrics,” UMB School of Pharmacy and the University of Helsinki in Finland (Nicole J. Brandt, PharmD, MBA, BCGP, BCPP, FASCP, Executive Director, The Peter Lamy Center on Drug Therapy and Aging & Professor, Pharmacy Practice and Science; and Daniel Mansour, PharmD, BCGP, FASCP, Interprofessional Clinical Coordinator)

COVID-19 impact:

In response to the pandemic and the need to teach online, the program had a specific focus on virtual exchange, particularly COIL courses in 2021.

Future Plans:

In the future, CGE would like to collaborate more closely with the Faculty Center for Teaching and Learning on this program, with a particular focus on pedagogical strategies faculty can utilize to achieve the aims of globalized courses. Global learning seeks to encourage active and collaborative learning between students of diverse backgrounds. CGE would like to explore the possibility of including GLOBALtime fellows in the new Lumen Circles pilot program on inclusive teaching.

International Partnership Support

Since its inception, CGE has supported international partnerships by connecting faculty members across schools and collaborators overseas: advising on relationship development, curricular, and logistical details; and providing funding support. The 2020 Internationalization Report included recommendations relating to international partnerships. To act on these recommendations, in late 2021, CGE created the International Partnership Support initiative and charged Dr. Bonnie Bissonette with leading the effort. Dr. Bissonette’s functional title is now “Senior Director for International Partnerships.” This initiative and Dr. Bissonette’s leadership role will provide concrete support for the development of and support for international partnerships in all UMB schools.

Links to Internationalization and UMB Strategic Plan:

- **IZN recommendation #2:** Increase funding for global activities.
- **IZN recommendation #3:** Increase number of established UMB international research, service, and learning sites.
- **IZN recommendation #4:** Provide access to global education for all students.
- **UMB Strategic Plan #1:** Promote interdisciplinary, innovative, equitable, and sustainable solutions to domestic and global challenges.
- **UMB Strategic Plan #2:** Provide students the opportunity to engage in global learning.

Updates from 2021:

To launch the international partnership effort, CGE is providing small seed grants (\$5,000) to each UMB school in 2022 to cultivate an existing partnership that may be challenged due to the pandemic or need a small infusion of funds to grow in the future.

COVID-19 impact:

This new initiative was specifically in response to the pandemic, designed to keep current partnerships active, and providing an opportunity to begin relationships that were not possible due to COVID-19.

Future Plans:

International partnerships require funding for productive engagement; Dr. Bissonette will work with faculty and others at UMB to identify funding sources for partnerships and partnership activities. In 2022, a new UMB partnership with DOW University for Health Sciences is being inaugurated with observerships at UMB funded by DOGANA, the North American Alumni group of DOW University. The Center is facilitating the details of this unique arrangement, which is the brainchild of Dr. Muhammad Mohiuddin, the current President of the DOGANA and Director of UMB's Cardiac Xenotransplantation Program. In addition to the International Partnership Initiative, Dr. Bissonette will meet with faculty, staff, and students to discuss ideas for interdisciplinary global programming, partnership development and maintenance, and engagement of students in UMB's international partnerships at all stages.

Tiri Scholars Program

The Tiri Scholars Program is a program in the UMB Graduate School staffed through CGE. Semhar Okbazion, Assistant Director in the Office of International Services in CGE, is the Director of the program. The competitive, full-tuition scholarship program was started in 2019 to provide an opportunity for members of the UMB family living and working outside of the United States to have access to the Graduate School's online degree programs (the MS in Health Science or MS in Global Health programs). To date, the program has targeted primarily UMB affiliates associated with the School of Medicine's Center for Health, Education, and Biosecurity (Ciheb's) but may expand to include other UMB-affiliated international groups in the future.

Links to Internationalization and UMB Strategic Plan:

- **IZN recommendation #5:** Increase support for international students and scholars.
- **UMB Strategic Plan #3:** Expand programs for international students, scholars, faculty, and staff.

Updates from 2021:



The program was officially named to honor the life and work of Henrietta Selle Tiri, a student in the inaugural class of scholars who tragically lost her life on March 25, 2021. The program was expanded by naming a director and adding programming for scholars in the program. The program is being developed so that, in addition to providing an educational opportunity for internationally-based students, the students form an online community, are able to engage with the broader UMB community, and have opportunities to share their rich backgrounds working with global health research and service delivery programs.

The program made important organizational strides in 2021. A central file has been created with data about the students so that Graduate School faculty and administrators have ready access to critical information and can track students' needs and questions. Tiri Scholars are Graduate School students who can and should access Graduate School services directly. However, given that this cohort lives outside the country and were trained under a different educational system, CGE's goal for the program is to support their unique needs, direct students as necessary, and serve a coordinating role for the program. The inaugural cohort of Henrietta Tiri Scholars met for the first time October 26, 2021.

COVID-19 Impact:

The program is online and therefore was not significantly impacted by the pandemic.

Future Plans:

The website and application process are being streamlined for a smoother experience.

Hosting Global Events

CGE functions as a hub to support all UMB's schools by creating campus-wide global programs. The interprofessional nature of the center allows CGE to focus on a diverse roster of topics, encompassing global health, law, and social work. With the hiring of Lauren Taylor, Senior Communications and Events Specialist, in the spring of 2020, CGE hosted its first two webinar series in the fall of 2020, focusing on human rights in the U.S. and global health. Those two series paved the way for CGE's second Global Health Summit and a Vulnerability and Violence series with the UM Graduate School.

Links to Internationalization and UMB Strategic Plan:

- **IZN recommendation #4:** Provide access to global education for all students.
- **IZN recommendation #7:** Develop and share best global practices.
- **IZN recommendation #10:** Promote global leadership on campus.

Updates from 2021:

Human Rights at Home Webinar Series (2020)

In the fall of 2020, CGE hosted a Global Perspective Series on "Human Rights at Home" with experts discussing why the U.S. has taken a divergent route on human rights and how embracing the international human rights system could make an impact in addressing system racism and access to education and health care. CGE's Semhar Okbazion lead the series, which included:

- "Racial Injustice in the U.S. from a Human Rights Perspective" September 17, 2020
- "Experiences of Black UMB Students, Scholars, and Alumni" October 13, 2020
- "Health as a Human Right in the United States: What COVID-19 Has Exposed" November 17, 2020

UMB Global Health Summit 2021: Decolonizing Global Health Education, May 25-26, 2021

In collaboration with the UMB Office of the Provost and led by Dr. Faerron Guzmán, the virtual two-day Summit featured a thought-provoking keynote presentation and interprofessional panels of students/trainees, faculty members, and other experts from UMB and close global partners. More than 350 attendees heard from students in 11 professional programs share their reflections on this issue and the future of global education. In preparation, 38 faculty leads worked with 58 Summit Scholars.

On a final day of strategic planning, 91 invited faculty and staff examined the lessons from the summit and explored a path forward.

Vulnerability and Violence Reduction Webinar Series with the UMB Graduate School

With the help of CGE, UMB Graduate School held a webinar series created to showcase the topics and objectives covered in the new Vulnerability and Violence Reduction MS program, a groundbreaking academic partnership between UMB and Coventry University's Centre for Peace, Trust, and Social Relations (UK).

- [Understanding Vulnerability Across Communities and Borders](#) March 25, 2021 (43 attendees)
- [Responding to Violence: What Can We Learn from Others?](#) April 8, 2021 (31 attendees)
- [Vulnerability, Victimology, and Breaking the Cycle](#) April 27, 2021 (42 attendees)

COVID-19 Impact:

Due to COVID, all events were held virtually during 2021. By being virtual, students, colleagues, and partners from around the world were able to participate. For example, attendees of the Global Health Summit came from 21 countries across five continents. That would not have been possible without the virtual aspect.

Future Plans:

Upcoming events include the continuation of the PSLI Global Leadership specialization events (see next section for details) and “Critical Updates: The Fight Against Human Trafficking – Federal & International” on January 20, 2022 in partnership with the UM SAFE Center.

President’s Student Leadership Institute (PSLI)

The President’s Student Leadership Institute (PSLI) is an established UMB co-curricular certificate program designed to expose students from all schools on campus to contemporary issues in leadership and professional development, preparing participants for professional leadership in a diverse workplace. For the first time, in 2021, CGE developed a Global Leadership specialization, which is a way for students to learn about critical issues in global health and leadership without getting on a plane, with 83 applicants. It was an important addition to UMB’s global offerings in a year when no international travel was available.

Links to Internationalization and UMB Strategic Plan:

- **IZN recommendation #4:** Provide access to global education for all students.
- **IZN recommendation #10:** Promote global leadership on campus.
- **UMB Strategic Plan #2:** Provide students the opportunity to engage in global learning.

2021 Updates:

Nine Global Leadership sessions were planned for the inaugural year. All are open to the public in addition to PSLI students.

- **Ethical Global Engagement: The Problem with Voluntourism** Oct. 14 with Virginia Rowthorn (13 attendees)
- **Leading a Diverse Global Staff** Oct. 26 with Amy Ramirez (17 attendees)
- **Decolonizing Global Health** Nov. 4 with Dr. Carlos Faerron Guzmán (27 attendees)
- **Leading During an Emergency: The Peace Corps Response to a Global Pandemic** Nov. 16 with Dr. Jody Olsen (21 attendees)
- **What Is Human Trafficking** Jan. 19 with Amelia Rubenstein, UM SAFE Center (18 attendees)
- **Engaging Globally: How to Launch Your Global Career** Jan. 25 with Bonnie Bissonette (16 attendees)
- **Samoa: An Interprofessional Public Health Case Study** Feb. 9 with Michael Sikorski and Susana Brown
- **Engaging Youth in Mental Health Approaches in Kenya and the U.S.** Feb. 24 with Dr. Peter Memiah and Dr. Fernando Wagner
- **Working with Interpreters** March 10 with Bonnie Bissonette

COVID-19 Impact:

The program is online and therefore was not significantly impacted by the pandemic.

Future Plans:

Given the success of the first year of the program, CGE will host it again in academic year 2022-23.

Graduate School Support

The Center for Global Engagement is affiliated with the Graduate School at UMB. Staff members Virginia Rowthorn and Dr. Bonnie Bissonette are faculty members in the Graduate School, as is CGE Senior Fellow Dr. Carlos Faerron Guzmán, Program Director of the MS in Global Health.

Links to Internationalization and UMB Strategic Plan:

- **IZN recommendation #4:** Provide access to global education for all students.
- **UMB strategic plan #1:** Promote interdisciplinary, innovative, equitable, and sustainable solutions to domestic and global challenges.
- **UMB Strategic Plan #2:** Provide students the opportunity to engage in global learning.

2021 Updates:

Degree Program Support

- **MS in Global Health:** Virginia Rowthorn helped Dr. Carlos Faerron Guzmán with the logistics of creating the new degree program, seeking MHEC approval, and marketing, including co-hosting three substantive marketing webinars (described in the Events section).
- **PBC in Global Health Innovation:** Virginia Rowthorn helped develop and seek MHEC approval for this certificate program that will take place in Costa Rica starting in Fall 2022 depending on pandemic circumstances.
- **PBC in Global Health Systems and Innovation:** Bonnie Bissonette served as Program Director for this degree for three years before the degree was incorporated into the MS in Global Health in 2021. Low enrollment and administrative hurdles that arose when the name of the degree was changed complicated development of the PBC, which will likely grow in enrollment now that it is part of the MS in Global Health degree.
- **MS and PBC in Vulnerability and Violence Reduction:** Virginia Rowthorn served as Program Director for these degree programs. Due to the pandemic, the start of the degree was postponed twice. At the time this report is published, the future of these programs is unclear.

Partnership Support

Bonnie Bissonette is supporting Dr. Carlos Faerron Guzmán and Denise Orwig, Director, Baltimore Hip Studies and Co-Director, Doctoral Program in Gerontology PhD program in Gerontology, in development and implementation of the Alicia and YaYa Global Fellowship in Aging Research, a collaborative program between UMB (led by the Graduate School) and the University of Costa Rica funded through a generous donation from Dr. Marco A. Chacon. In 2021, the program was designed and developed so that the exchange of Fellows and the formal launch of the program are ready to go when pandemic conditions allow.

Committee Membership

- Issues in Higher Education Committee: Virginia Rowthorn (chair), Amy Ramirez
- Diversity and Equity Committee: Bonnie Bissonette
- Strategic Planning Committee (Community Engagement theme): Virginia Rowthorn (co-chair)

UMB International Operations Initiative

The International Operations Initiative (IOI) is a new initiative developed by the Office of the Provost and Senior Vice President for Administration and Finance to create a Global Operations Hub (one-stop-shop) to improve the quality of effective and efficient support to UMB's international activities while ensuring strong risk management. The Global Operations Hub and a new International Operations department will guide, support, and build the capacity of all UMB's international activities by providing specialized direct services in procurement, finance, audit, ethics, HR, safety and security, and other operational areas in support of international engagements. Virginia Rowthorn is co-directing the effort with Jennifer Flinn, Maryland Global Initiatives Corporation, and the support of consultants Spee Braun and Laura Barrantes. Bonnie Bissonette is a member of the Core Team.

CGE is strongly supportive of the IOI as it will address a consistent concern among faculty who work with CGE on global initiatives: administrative difficulty operationalizing their projects. The IOI promises to elevate UMB's global enterprise by supporting faculty through user-friendly processes while maintaining strong risk management.

Links to Internationalization and UMB Strategic Plan:

- **IZN recommendation #6:** Build strong campus support for global infrastructure.
- **UMB Strategic Plan #4:** Provide enhanced operational support for global activities.

2021 Updates

The IOI was launched in 2021 and the planning phase is complete. This phase involved a comprehensive analysis of UMB's current operational structures and needs. Based on this analysis, a plan was developed to evolve the existing International Affiliate Support division which supported the Maryland Global Investment Corporation (MGIC) and its overseas country offices into a larger department called International Operations. Part of the planning process involved clearly articulating CGE's current functions which will continue (academic, curricular, education, early planning issues, visa and immigration) and expand (a Global Hub website and global presence map), as well as what International Operations will handle (international procurement, travel, HR, safety and security). The two entities will remain separate, but both will be accessed through a Global Hub and will work together closely. Several new positions are proposed to help CGE meet its expanded support role and increased demand envisioned under the IOI.

Future Plans

CGE will support completion of the IOI and help ensure smooth implementation. The initiative should be completed in Summer 2022 with new positions being hired in 2022 and 2023. CGE will also help with change management to encourage use of the Global Hub by faculty and staff.

International Travel Support

For 10 years, CGE has taken the lead on international travel because of Bonnie Bissonette's expertise in this area, acquired overseas when she served as management officer at several U.S. embassies, responsible for all administrative functions, including international travel and risk assessment. Bonnie acts as the go-to person on campus when questions arise about international travel, particularly the associated risks at any given time or place. She and Steve Deck, Director of Environmental Health and Safety, handle all international travel issues or emergencies between them at this time until the IOI is complete. UMB international travel continued to require significant oversight and engagement of Center personnel in both decision-making as well as international travel messaging and facilitation in 2021, despite the continued reduction in international travel because of the pandemic.

Links to Internationalization and UMB Strategic Plan:

- **IZN recommendation #6:** Build strong campus support for global infrastructure.
- **IZN recommendation #7:** Develop and share best global practices.
- **UMB Strategic Plan #4:** Provide enhanced operational support for global activities.

2021 Updates:

International travel processes and procedures established in 2020 continued in 2021 and were refined regularly as the pandemic-related travel situation evolved. In 2021, the following rules were put in place for international travel:

1. Faculty and staff UMB-related international travel to countries designated as U.S. State Department Advisory Level 1 and 2 require only a supervisor's approval.
2. Faculty and staff UMB-related international travel to U.S. State Department Advisory Level 3 (Reconsider Travel) and Advisory Level 4 (DO NOT TRAVEL) countries require a briefing by International SOS before travel, approval of the appropriate Dean/VP or their designee, and final approval of the Provost, in addition to the requirements for Level 1 and 2.
3. All UMB student international travel was suspended, with approvals granted in exceptional circumstances.

Future Plans:

International travel on behalf of UMB, and the various processes and procedures involved in such travel has rested primarily in the Center for Global Engagement in terms of communicating new information, conducting training, and providing guidance. In the future, international travel will be housed in the International Operations area, bringing together all of the administrative support functions for global engagement in a one-stop operations shop, and vastly improving the service to UMB's global professionals.

Scholarship, Presentations, External Leadership Roles

CGE staff is active in scholarship and advocacy in international education and global health. This elevates the center from existing simply as a service center and allows it to take a role internally and externally as a leader in our field through development of best practices, advocacy at state and federal levels on issues of importance, and convening of critical stakeholders.

Links to Internationalization and UMB Strategic Plan:

- **IZN recommendation #7:** Develop and share best global practices.
- **IZN recommendation #9:** Communicate successes.
- **UMB Strategic Plan #1:** Promote interdisciplinary, innovative, equitable, and sustainable solutions to domestic and global challenges.

2021 Updates:

- Virginia Rowthorn and Dr. Yolanda Ogbolu, SON are PIs on a three-year Robert Wood Johnson Foundation Grant (\$950,000) to create the Global Learning for Health Equity Network. The network will examine ways to learn from other countries to address health care inequities. In 2021, Rowthorn and Ogbolu wrote a scoping review which will shortly be submitted for publication and held a three-part webinar series in December with international speakers on the future of global learning.
- Amy Ramirez and Virginia Rowthorn are in the final edits of a book chapter titled *Human Rights in U.S. Professional Education: Identifying and Overcoming Challenges* that will be published in the book *Emancipatory Human Rights and the University* in 2022.

- Amy Ramirez will be presenting the research paper “Going It Alone: International Doctoral Student Career Development” at the American Educational Research Association conference in April 2022.
- Virginia Rowthorn and colleagues from University of Minnesota and UCSF had a chapter accepted on “Advising on Clinical Experience and Patient Care Exposure at Home and Abroad” that will appear in Handbook of Research on Advising and Developing the Pre-Health Professional Student.
- Dr. Carlos Faerron Guzmán and Virginia Rowthorn are Guest Editors of a Special Collection on Decolonizing Global Health in the *Annals of Global Health* (forthcoming 2021). It will include 12 articles developed from the May 2021 UMB Global Health Summit on the same theme. Lead authors of the articles that will appear in the Special Collection are:
 - **Dhruv Shah**, UM School of Medicine student
 - **Shailey Prasad**, University of Minnesota, with co-author Virginia Rowthorn
 - **Agnes Binagwaho**, University of Global Health Equity, Rwanda
 - **Ipek Demir**, University of Leeds, UK
 - **Chikosa Banda**, University of Malawi Chancellor College of Law
 - **Ijeoma Nnodim Opara**, Wayne State University
 - **Caroline Long**, UM School of Social Work
 - **Gabriela Arguedas**, University of Costa Rica
 - **Elisabeth Maring**, University of Maryland School of Public Health
 - **Promise Mtima-jere**, University of Malawi, with UM School of Medicine co-authors
 - **Nancy Bolan** and **Veronica Njie-Carr**, UM School of Nursing, with University of The Gambia co-authors
 - **Madiha Raees**, The Children’s Hospital of Philadelphia, with UM School of Medicine co-authors
 - **Cassidy Claassen**, UM School of Medicine, with University of Zambia co-authors
 - **Danya Qato**, UM School of Pharmacy
- Semhar Okbazion will present on increasing access to U.S. higher education for refugee and displaced students at the NAFSA annual conference in May 2022.
- Gina Dreyer presented “International Student & Scholar Updates and Planning for Fall” to NAFSA Region VIII on July 6, 2021.

Leadership Roles

- Virginia Rowthorn is on the Board of the Consortium of Universities for Global Health and Chair of the Membership Committee (starting in March 2021).
- Gina Dreyer served on the International Student and Scholar Regulatory Practice Committee for NAFSA: Association of International Educators and served on the NAFSA Region VIII team from 2019-2021.
- Gina Dreyer has a leadership role in BAIE (Baltimore Area International Educators) group, co-leading their first virtual meeting in May of 2020.
- Bonnie Bissonette served on the Executive Committee of the Board of Directors of NAFSA: Association of International Educators and continues to serve on the Board until the end of 2022.

Creation of USM Global Advisory Committee

Virginia Rowthorn and Bonnie Bissonette launched the first system-wide organization of university senior international officers and international education office directors. Dr. Jo Boughman, Senior Vice Chancellor for USM, has championed the group and joins monthly meetings. On June 17, the group presented to the USM Board of Regents on the importance of international education and drafted statements for Chancellor Jay Perman to share for 2021 International Education Week. Future plans include discussions about sharing resources between the more resourced universities to support the universities with smaller offices and a system-wide global initiative.

Leadership of International Focus Group for UMB's COVID Recovery Task Force

CGE leads (Virginia Rowthorn and Amy Ramirez) and staff (Bonnie Bissonette) head up this focus group which has brought together campus-wide stakeholders to help UMB senior administrators make decisions regarding international travel, international research, and international students and scholars.

Philanthropy

Philanthropy is becoming an increasingly important function for CGE with several initiatives underway. With the help of Kyle Locke, Chief Development Officer for the Graduate School, CGE is pursuing several initiatives with donors including the proposed UMB Global House, an endowment for observerships for medical students from DOW University for Health Sciences, faculty development programs, and increased giving to the Henriatta Tiri Scholarship Fund.

Future Goals

Communications

During 2022, CGE plans to find ways to work together and coordinate communications efforts with other UMB offices and partnerships, particularly the Center for International Health, Education, and Biosecurity (Ciheb) and the Center for Vaccine Development (CVD). There is much work being done across the university but no coordinated strategy to promote it. Working with OIS staff, CGE wants to expand promotion of student-led events and initiatives in both CGE's monthly newsletter and social media. If COVID allows for in-person activities, other initiatives include using social media to bring attention to CGE activities, such as a flash mob dance to international music as part of the International Student Welcome. In 2020, the CGE website received a complete overhaul and it's time for the OIS site to be redesigned.

More Robust International Student Programming

OIS plans to connect with the UMB schools to develop career-focused programming for international students. We also plan to work with the Intercultural Center and student organizations to support student-led social programs.

Multipurpose "UMB Sites" in Overseas Settings

An important recommendation from the Internationalization Report was the establishment of "UMB sites" in select countries and regions of that world to serve as research, education and service hubs for students, faculty, post-docs, and collaborators. The UMB Sites will be established in countries where UMB already has connections and relationships, with future growth envisioned. One possible location is Costa Rica, where faculty from the School of Social Work and the Graduate School are engaged with counterparts at the University of Costa Rica. Other countries where UMB has significant shared investment in clinical service delivery and research are also possible locations for a center of excellence in global engagement. The process of selecting the sites and designating the centers will include multiple opportunities for UMB faculty and leadership to generate and share ideas, concerns, and recommendations.

Coordinated Fulbright Program

The Fulbright program is a key platform for global engagement; UMB both sends and receives Fulbright scholars (Dr. Sarah Dababneh, School of Social Work, is currently on a Fulbright research award in Egypt) but would benefit from a coordinated Fulbright program, either for faculty or for UMB students interested in applying for a Fulbright award. CGE will organize such a program, with input from the CGE Faculty Advisory Council, to include establishing a point person in each of the schools, as well as a calendar of events to coincide with Fulbright application deadlines, with an expected launch date in early Fall 2022.

